

ROUGH RIDER

**RANCO**  
ALUMINUM TRAILERS

OPEN TRAILERS



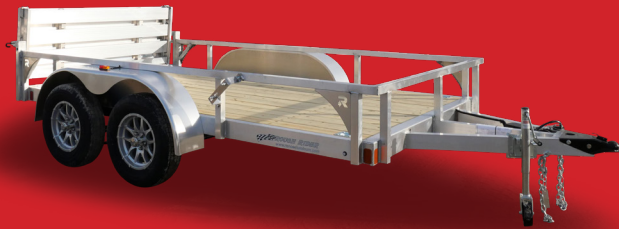
**ROUGH RIDER**  
**>>> OPEN & DUMP TRAILERS**





# >>> ROUGH RIDER ALUMINUM UTILITY & DUMP TRAILERS

VISIT OUR WEBSITE  
FOR FULL FEATURES  
AND SPECIFICATIONS



## UTILITY FEATURES

- 2" x 4" Alum Tube Frame (SA Models)
- 2" x 5" Alum Tube Frame (TA Models)
- 5,000 lb. D-Ring Tie Downs
- A-Frame Tongue
- 1,000 lb. Top Wind Tongue Jack
- Silver Mod Wheels with Radial Tires
- 5/4" x 6" Treated Deck Boards
- 13" Tall Tube Side Rails
- 3,500 lb. Spring Axles
- Electric Brakes w/Breakaway System (TA Models)
- LED Clearance Tail Lights
- Aluminum Hinges with Grease Zerks
- Spring Loaded Ramp Gate Latches

## DUMP FEATURES

- 1-Yr. Warranty
- All Aluminum Construction
- 2"x5" Double Hollow Tube Subframe
- Lippert Spring Axle w/ Brakes
- 2" Coupler w/ Safety Chains
- Swing-Up Tongue Jack w/ Wheel
- Compact Tongue Storage Box
- Undermount Battery/Pump Storage
- 12V Hydraulic Pump
- 3000 PSI Hydraulic Ram with Power Up/Down System
- Aluminum Deck & Sides
- Removable Ramps
- 11.5" High Dump Sides
- LED Marker Lights

## POPULAR OPTIONS

- Fold Down Stabilizer Jacks
- Swing Up Tongue Jack
- Sand Pad for Tongue Jack
- Surface Floor Mount D-Ring
- Recessed Floor-Mount 5,000 lb. D-Ring Tie Down
- Recessed Floor-Mount 6,000 lb. Swivel D-Ring Tie Down
- Wheel Chock (Recessed, Flip Up)
- Wheel Chock (Removable)
- Aluminum Plank Flooring (Utility Models Only)
- Side Ramp Gate for Utility Models (54" Wide, Models 12' and Longer)
- 5' Removable Side Rail Ramps (82" Width) (Models 12' and Longer)
- Bi-Fold Ramp Gate

## UTILITY TRAILERS

## DUMP

SPECIFICATIONS

Model	RRU558SA	RRU5510SA	RRU6510SA	RRU6512SA	RRU6514SA	RRU6514TA2	RRU6516TA2	RRU6518TA2	RRU6520TA2	RR0D468SAE
GVWR	2990 lb.	2990 lb.	2990 lb.	2990 lb.	2990 lb.	7000 lb.	7000 lb.	7000 lb.	7000 lb.	2990 lb.
Curb Weight	550 lb.	585 lb.	615 lb.	660 lb.	705 lb.	1225 lb.	1285 lb.	1380 lb.	1475 lb.	845 lb.
Payload	2440 lb.	2405 lb.	2375 lb.	2330 lb.	2285 lb.	5775 lb.	5715 lb.	5620 lb.	5525 lb.	2145 lb.
Coupler Size	2"	2"	2"	2"	2"	2 5/16"	2 5/16"	2 5/16"	2 5/16"	2"
Exterior Length	12' 3"	14' 3"	14' 3"	16' 3"	18' 3"	18' 3"	20' 3"	22' 3"	24' 3"	12' 11"
Exterior Width	88"	88"	100"	100"	100"	100"	100"	100"	100"	58.5"
Bed Width	66"	66"	78"	78"	78"	78"	78"	78"	78"	53.5"
Bed Length	96"	120"	120"	144"	168"	168"	192"	216"	240"	97"
Side Rail Height	13"	13"	13"	13"	13"	13"	13"	13"	13"	11.5"
Platform Height	18"	18"	18"	18"	18"	18"	18"	18"	18"	25.5"
Axles	1-#3500	1-#3500	1-#3500	1-#3500	1-#3500	2-#3500	2-#3500	2-#3500	2-#3500	1-#3500
Suspension	Spring	Spring	Spring	Spring	Spring	Spring	Spring	Spring	Spring	Spring
Brakes	Optional	Optional	Optional	Optional	Optional	4-10" Electric	4-10" Electric	4-10" Electric	4-10" Electric	2-10" Electric
Tires	ST205/75 R15 (C)	ST205/75 R15 (C)	ST205/75 R15 (C)	ST205/75 R15 (C)	ST205/75 R15 (C)	ST205/75 R15 (C)	ST205/75 R15 (C)	ST205/75 R15 (C)	ST205/75 R15 (C)	ST145/R12 (E)
Wheels	Silver Steel	Silver Steel	Silver Steel	Silver Steel	Silver Steel	Silver Steel	Silver Steel	Silver Steel	Silver Steel	Silver Steel
Tie-Downs	(4) 5000# D-Rings	(4) 5000# D-Rings	(4) 5000# D-Rings	(4) 5000# D-Rings	(4) 5000# D-Rings	(6) 5000# D-Rings	(6) 5000# D-Rings	(6) 5000# D-Rings	(6) 5000# D-Rings	Optional
Floor	5/4" x 6" Treated	5/4" x 6" Treated	5/4" x 6" Treated	5/4" x 6" Treated	5/4" x 6" Treated	5/4" x 6" Treated	5/4" x 6" Treated	5/4" x 6" Treated	5/4" x 6" Treated	Aluminum
Ramp	Extruded Aluminum	Extruded Aluminum	Extruded Aluminum	Extruded Aluminum	Extruded Aluminum	Extruded Aluminum	Extruded Aluminum	Extruded Aluminum	Extruded Aluminum	Stowable Ramps

**ROUGH RIDER**

3012 Mobile Drive  
Elkhart, IN 46514  
(574) 266-9028



[ranceluminum.com/rough-rider-utility-trailer](http://ranceluminum.com/rough-rider-utility-trailer)



Learn More  
Scan this barcode using  
a QR Reader on your  
smart phone to learn  
more about Forest River.

